



## ABOUT US

ESTCOM International was constituted in 2003 in order to provide highest technological solutions and services in the field of Information Technology, Security and Communications sector for private, commercial sectors and governmental leading institutions

ESTCOM International service concept depends on Unconditional Customer Satisfaction. Together with its professional staff operating in Port Harcourt, Rivers State, Nigeria. ESTCOM is in full control of all of its installed systems in Nigeria, trusting its technical staff that consists of highly expertised engineers and technicians in advanced security technologies and telecommunication systems.

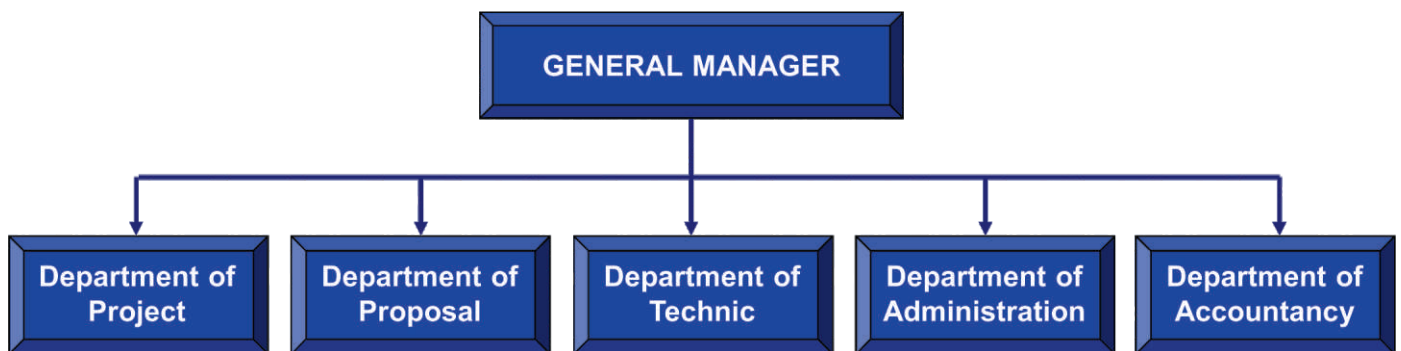
ESTCOM International has been the leading counselor and installer since the commencement of activities in the field of Information Technology, Security and Communications systems in relevance with project design and implementation services; and it provides solutions through applying the latest technological events.

Consultancy and project preparation services,  
System & product procurement, and installation services  
Supply and Installation of CCTV Camera,  
Automatic Slide and Swing Door, Boom Barrier,  
Access Control/Time Attendance System,  
Networking and PABX System,  
Hotel Management Software





## ORGANISATIONAL STRUCTURE





## CLOSED CIRCUIT TV SYSTEMS

ESTCOM International designs Closed Circuit TV Systems, which have become an indispensable part of electronic security and automation systems over the last 10 years. Our company designs integrated systems for projects taking into account all the requirements envisaged by the customer. Large and small projects are designed by considering the operating scenarios provided by the customer and the risk analysis carried out by the engineers of our company to provide optimum equipment configuration.

Closed Circuit TV Systems installed for security purposes are normally used to manage the movement of people around the areas to be protected which can also be monitor remotely via mobile Devices. The videos captured by these cameras are stored either digitally or conventionally on the device hard drive which can also be backup via USB flash drive. The digitally stored videos can be accessed from a remote location.



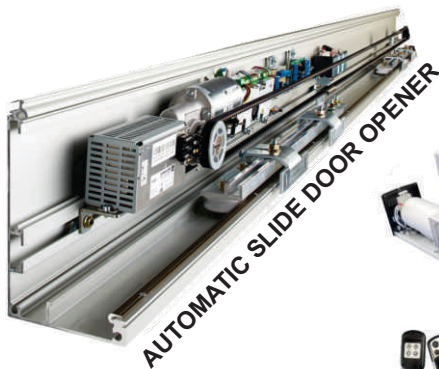








**AUTOMATIC ROLLING GATE OPENER**



**AUTOMATIC SLIDE DOOR OPENER**



**AUTOMATIC SWING DOOR OPENER**



**AUTOMATIC SWING GATE OPENER**

**AUTOMATIC BOOM-BEARER**

## DOOR AND GATE AUTOMATION SYSTEMS

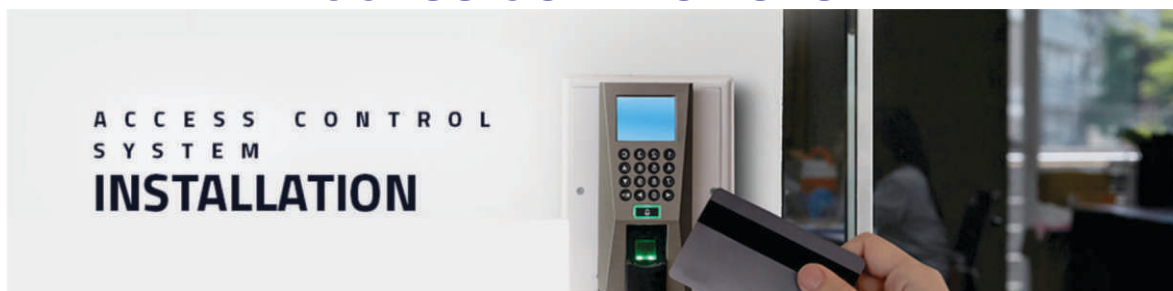
ESTCOM International provides installations of automatic doors/gates opener systems, which constitute an integral part of electronic security systems, with a wide range of products according to the operating scenarios provided by the customer and the risk analysis carried out by our engineers for the fulfillment of multiple purposes. These are put into operation and delivered as a turnkey optimum equipment configuration, this automation can also be integrated with Fingerprint, RFID or Password access system to gain entrance.

This innovations can be used on public entrances like Hotels, Hospitals, Events Center, Entrance Gate to Homes, Offices complexes, Estate Entrance, etc.





## BIOMETRIC AND FINGERPRINT IDENTITY ACCESS CONTROL SYSTEM



ESTCOM has included biometric systems in its Access Control configurations four years ago. This provides solutions and makes it possible for the system to be integrated according to the scenarios provided by the customer. The systems are therefore installed based on the risk analysis carried out by our company to provide turnkey solutions with an optimum equipment configuration.

Biometric devices, used as stand-alone or integrated systems are designed by making use of the measurable unique physical human characteristics for identity verifications.

Biometric solutions that utilize measurable unique human body parts are as follows: Finger Print Identification System, Face Recognition System, Iris Identification System, Retina Identification System, Hand Geometry Identification System and Vein (Fist) Identification System.

**IMPLEMENTATION:** The access control system can be used on Entrance doors into restricted area or room, for example; a restricted office only for some specific staff members in an organization i.e Finance office, Board room, etc. Where member are to access the room either by their fingerprint, face recognition, password or RFID. A Biometric Device can also be used to take record of members Time attendance to work by always clocking in and out on the device either with their fingerprint, Password, Face recognition or their RFID.





## INTERCOM PABX & VIDEO INTERCOM SYSTEMS

ESTCOM International provides installations intercom systems with/without video for the entrance security of homes and offices and offers a wide range of products in this field from small home systems to large systems such as residential estates, Hotels, Hospital, Office complex, etc. According to the operating scenario provided by the customer and the risk analysis carried out by our engineers with an optimum equipment configuration.

Intercom systems with or without image transmission are installed in the most suitable places to ensure entrance security and effective communication. They can be used as stand-alone or networked depending on the number of users and of entrances to be managed.

Depending on the existing wiring of the building or by the request from the customer, analog or digital intercom systems can be installed. Depending on installed configurations, the system permits host-visitor communication or communication between occupants of the same building or communication between a caretaker and visitors. In residential estates and condominiums, the system permits communication between the occupants of apartments and the security staff and visitors. Designs are normally carried out according to the chosen option and the budget of the customer.

For Hotel setup, the system permits communication between guests and the front desk, restaurant, bar, laundry, room service and inter-room communication as the case maybe, each room extension is configured to the hotel room number accordingly.



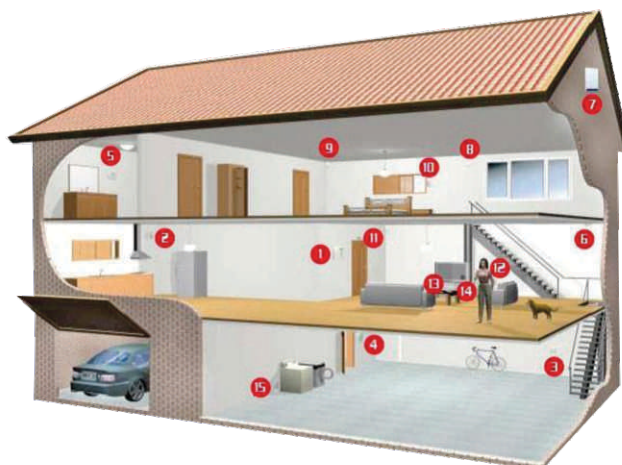




## BURGLAR ALARM SYSTEM

ESTCOM installs reliable and advanced wireless and conventional technologies for the security of homes and offices, integrating them, upon request, with electronic detection and automation systems compatible with the solution.

ESTCOM designs various projects intended to satisfy all sorts of requirements and to be compatible with all sorts of solutions of different scales and designs depending on the operating scenario provided by the customer and the risk analysis carried out by our engineers, and makes turnkey deliveries with an optimum equipment configuration.





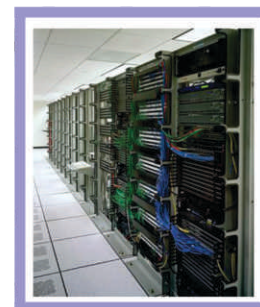
## SYSTEM NETWORKING



ESTCOM, has made it amongst the leading project companies of our country regarding network with the important projects it completed with its expert staff on LAN (Local Area Network), WAN (Wide Area Network), and complex networks.

ESTCOM's service understanding is based on ensuring the continuance of data flow by means of designing complete solutions on the basis of customer requirements, developing efficient solution mechanisms against possible problems, and by showing zero tolerance against any problems that may occur in data flow. Accordingly, at the beginning of every project, ESTCOM's engineers having network setup expertise carry out detailed investigation operations, determine exactly the requests and requirements of the customer, meticulously monitor the implementation of the project, and deliver key-in-hand the network setup by taking into consideration the most current world standards. ESTCOM's main objectives in its project implementations beside maximum customer satisfaction is to provide continuous and efficient data management.

ESTCOM which provides investigation, project design, planning, and consultancy services concerning network setup, remote access connections (WAN), RF-ID, and security technologies such as Ethernet, Fast Ethernet, Gigabit, Fiber Optic, and Wireless implements the application-training and consultancy services in the projects it undertakes in wholeness, and due to its expert personnel in this area, it aims to provide service as the only firm for all your network solution needs. Many of the projects completed by ESTCOM run without any problems in many public and private institutes countrywide.

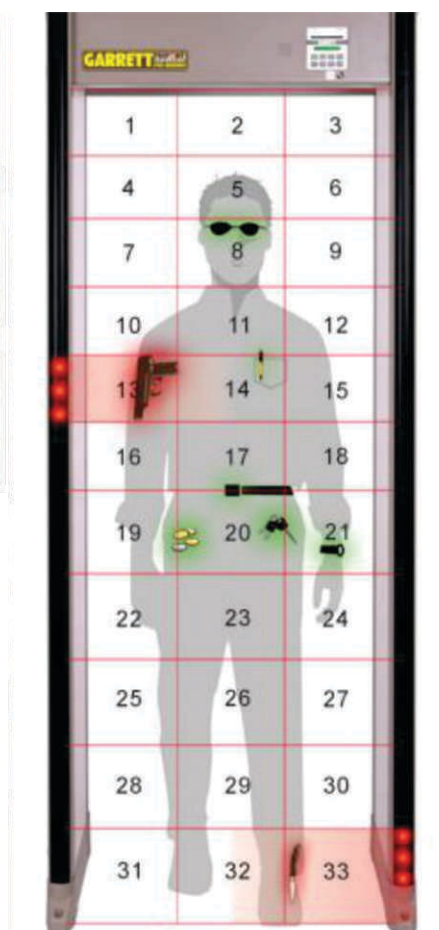




## SUPPLY AND INSTALLATION OF WALK THROUGH WEAPON & METAL DETECTORS

These detectors ensure the security level required for the building without hindering the circulation of people at entrances. They have 20 different high-speed operation programs, a precision of 200 degrees, a scanning of 33 different dotting areas and a detection technology with horizontal and vertical zones, and are able to carry out precise scanning jobs while permitting a passage intensity of 50-60 people per minute.

These devices have specially-designed circuits that prevent asking effect interference caused by interaction between two metals with inverse properties that annihilate the signals of each other and those are able to correctly detect all kinds of metal. They also record those passages that have created a high alarm level in a digital recording device by means of a camera and transfer them into a database.







## INSTALLATION OF X-RAY SECURITY SCREENING SYSTEMS

These are used at entrances of buildings for the passage control of parcels, luggage, bags and other similar objects to detect any weapons or explosives and to ensure the required security level for the building. The dimensions of the tunnel may vary between 82 cm x 65 cm and 80 cm x 100 cm depending on the intensity of the passage of luggage of the building. Thanks to the two-dimension detection system, all of the objects passing through the tunnel can be checked without any loss of image on the edges. They are able to see through 29-mm-thick steel.

The main property of the X-ray security screening systems is their capability of distinguishing colors and of isolating images by using organic/inorganic double-monitors to make the distinction between organic and inorganic matters with four colors to detect organic-based explosives. These detectors give a sound alarm upon detection of a suspicious piece of luggage and record the passages exhibiting a high alarm level in a digital recording device by means of a camera and transmit the data into a database.





## INSTALLATION OF HOTEL SUPPORT SOFTWARE SYSTEM AND GADGETS

We install hotel management software that manages guest from check in (front office) to restaurants and bar sales point. This also help to gather database of checked in guest and their account status with the hotel and ensures that guest bills are totally cleared before checking out of the hotel.

We also supply and install gadgets and devices that helps improve the services of the hotel to guest satisfaction. These gadgets includes; Smart room locks (RFID), energy saver wall switches, electronic room signage and electronic room signage doorbell.

